



**WANDLE  
LEARNING  
TRUST**

**Information for candidates**

## EXECUTIVE SUMMARY

Wandle Learning Trust was founded in 2018 by the leaders of Chesterton Primary School and Chestnut Grove Academy in Wandsworth. Harnessing the power of the successful and longstanding partnership between their two schools, Mark Siswick and Christian Kingsley have gone on to grow a unique multi-academy trust; the only one in the country to feature a Teaching School, plus Maths, English and Early Years Hubs.

Paxton Academy joined the Trust in 2019 and Ravenstone Primary joined in 2020. The Trust will continue to grow in a managed and sustainable way to create a community of outstanding schools with the highest expectations of all pupils, regardless of their backgrounds or starting points.

We believe:

- That every child has the right to be successful
- That schools should have the autonomy to respond to local needs as they know their children and communities best
- That creativity is fundamental to developing an engaging and stimulating curriculum
- That everyone involved in the community of schools within the Trust has a valuable contribution
- That all staff and students have the right to be safe and protected whilst at school and in their wider lives
- In identifying and taking the best practice across the Trust and sharing it so that as many children and staff as possible benefit
- In strength in diversity: the schools within the MAT will be diverse and their individual character will be protected and celebrated
- In leading by example through trusted and transparent leadership



## AN INTRODUCTION TO OUR TRUST

**At the heart of our work is a strong moral purpose and belief in doing what is best for children and young people. Our vision is:**

- To create a community of outstanding schools with the highest expectations of all pupils, regardless of their backgrounds or starting points
- A firm commitment to the belief that every child should be given every opportunity to fulfill their potential
- To develop a learning culture where bold and innovative teachers can make a difference
- To sustain excellence and growth across our community of schools
- To deliver high quality professional development for all members of staff
- To secure accountability based on transparent leadership



Chesterton Primary School is one of Wandle Learning Trust's founding academies. An Ofsted Outstanding 2 Form Entry inner city primary school situated in the heart of Battersea, 49% of pupils qualify for Pupil Premium funding and 58% have English as an Additional Language. Pupils achieve extremely well with 87% of Early Years pupils considered to have a good level of development and 95% of Key Stage 2 pupils reaching the expected level in Reading, Writing and Maths (against a national average of 65%). Chesterton's excellence in particular curriculum areas has led to it being awarded English Hub, Maths Hub and Early Years Hub funding.



Chestnut Grove Academy, the second of Wandle Learning Trust's founding academies, is a high-achieving, forward-thinking and caring community. A tradition of academic rigour, combined with creativity, characterises the school's ethos. In January 2019 Ofsted described the quality of leadership as 'exceptional', going on to say, 'The Headteacher and his team are unwavering and unstinting in their drive to improve the school.' In Year 11 47% of students gained at least a strong pass in English and Maths (England average





43%). Chestnut Grove's Sixth Form has recently been placed in the top 10% of schools nationally for the progress of students between Key Stage 4 and Key Stage 5.

## AN INTRODUCTION TO OUR TRUST

# PAXTON ACADEMY

SPORTS AND SCIENCE  
INDIVIDUALLY EXCELLENT, COLLECTIVELY BRILLIANT

Paxton Academy joined the Trust in July 2019 and is set to move into brand new purposebuilt primary school premises in Thornton Heath in time for the new academic year. A new Headteacher will also join the school in September 2020. As a school rated Inadequate by Ofsted, Paxton is on a rapid school improvement journey. In its inspection report of November 2019 Ofsted noted, 'The new Trust leaders' ambition is high... Trust leaders provide excellent expertise and support... They have a thorough understanding of what needs to improve and have the skills to do this. They are rightly acting with urgency.'



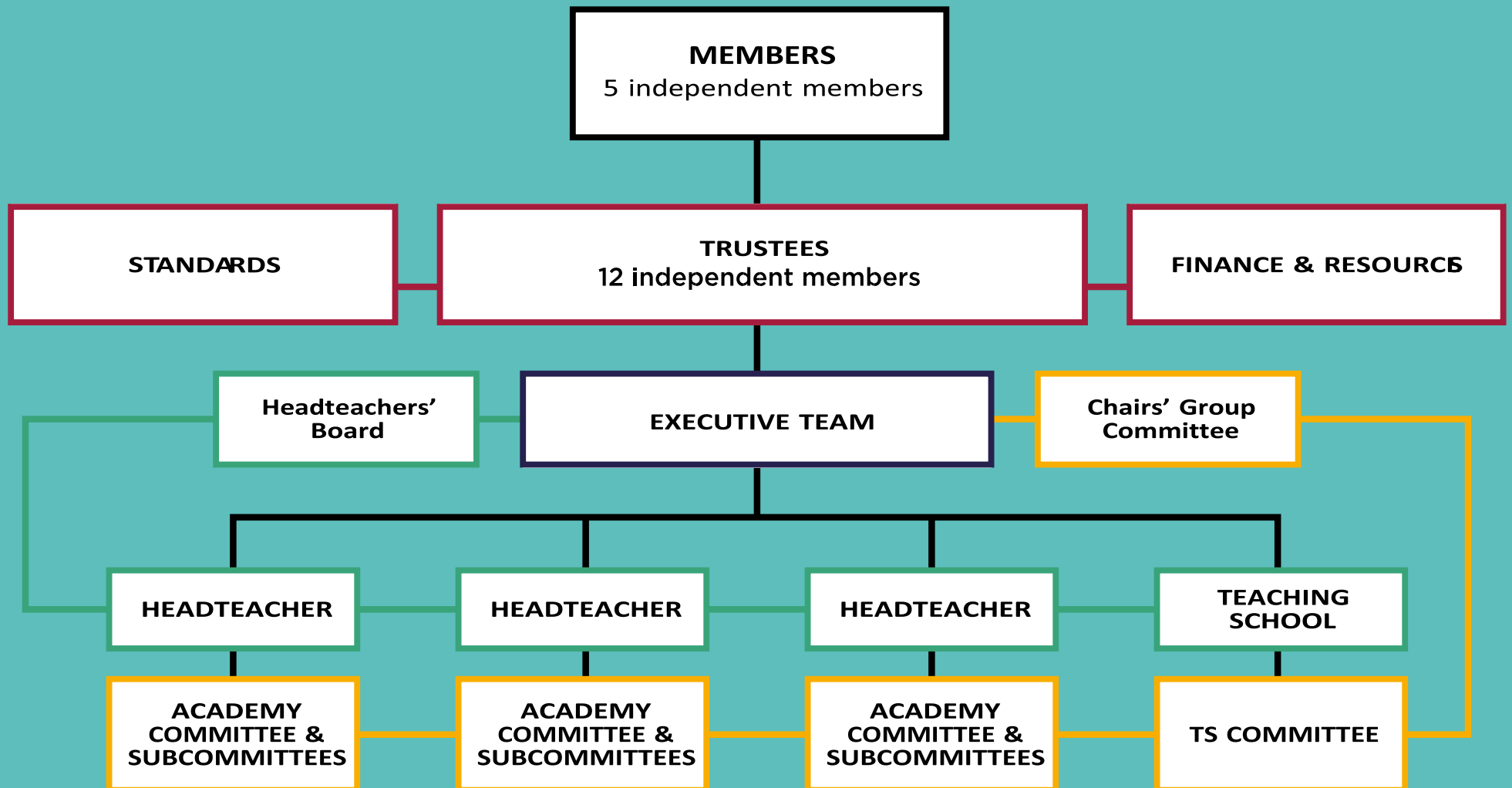
Ravenstone Primary School joined the Trust in October 2020. It is a thriving two form entry school in the heart of Balham with a Nursery and Resourced unit for pupils with a diagnosis of autism. Ravenstone's values – Happy, Kind, Creative, Honest and Determined – shape the everyday experiences of its children giving them the skills and knowledge they need to thrive in this modern world. The curriculum is based on a mastery approach and every lesson and every experience is tailored towards ensuring that every pupil succeeds.



The Teaching School and Hubs are based at Chesterton Primary School and provide professional development and school improvement services to hundreds of individuals and schools every year. The Teaching School also runs a full programme of bespoke teacher training courses. Funding comes via a mix of fees, grants and Department for Education and The Mayor of London's Office awards.



# LEADERSHIP AND GOVERNANCE STRUCTURE





## LEADERSHIP AND GOVERNANCE



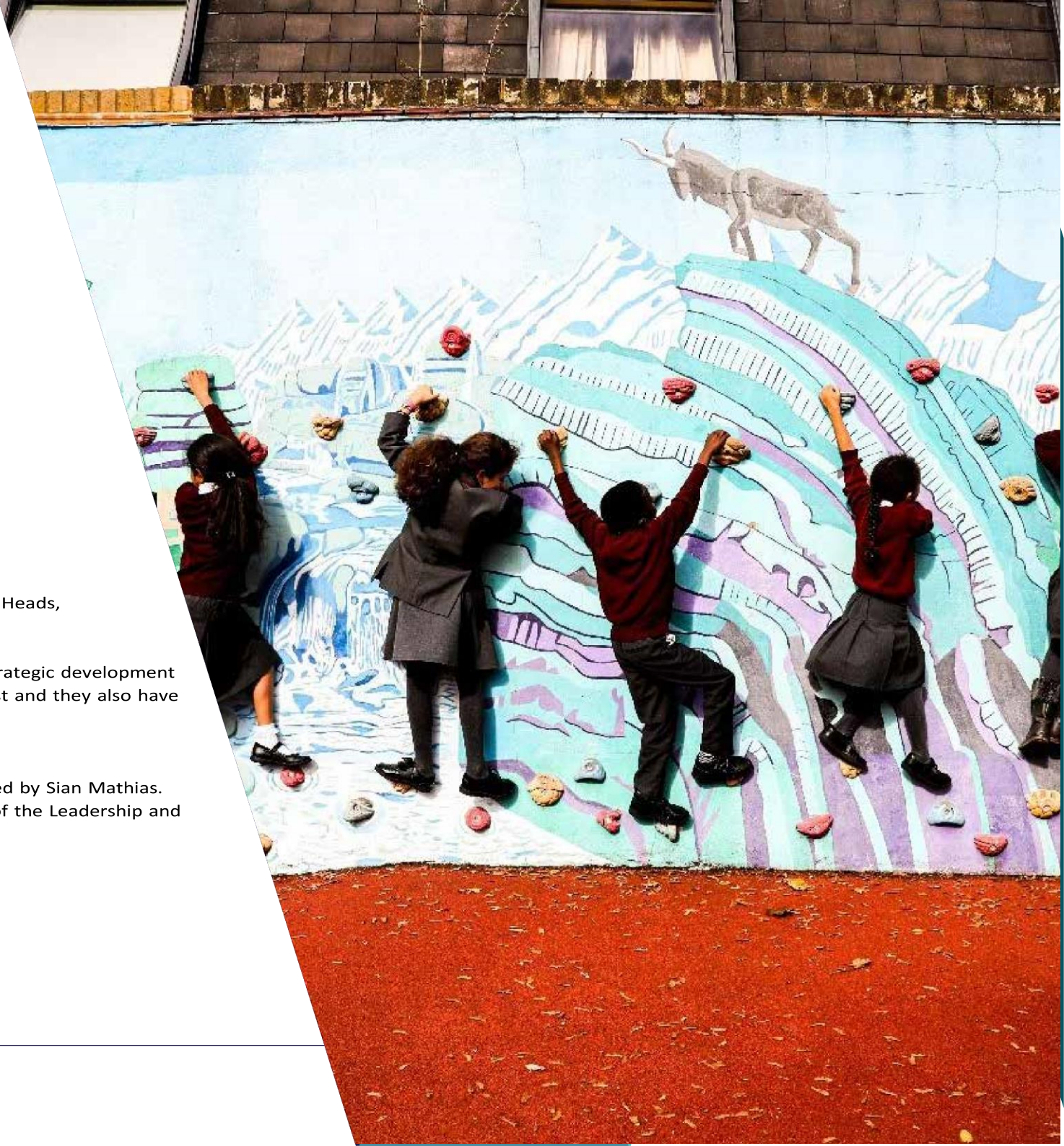
### Leadership

Wandle Learning Trust is led by its Joint Executive Heads, Mark Siswick and Christian Kingsley.

Mark and Christian work closely together on the strategic development and educational outcomes of Wandle Learning Trust and they also have individual responsibilities within the Trust.

### Governance

The Trust is governed by a Board of Trustees chaired by Sian Mathias. Please refer to the chart on page 5 for full details of the Leadership and Governance Structure.





## APPOINTMENT PROCESS AND HOW TO APPLY

Please complete the application form (CVs not accepted) addressing the criteria presented in the job description and person specification.

Completed applications should be emailed to [info@chestnutgrove.wandsworth.sch.uk](mailto:info@chestnutgrove.wandsworth.sch.uk).

The deadline for applications is midday on **Friday 5<sup>th</sup> February, 2021**.

Only shortlisted candidates will be contacted after the deadline

Wandle Learning Trust is committed to safeguarding and promoting the welfare of children and young people and the Board of Trustees expects all staff and volunteers to share this commitment. The successful candidate must be willing to undergo child protection screening appropriate to the post.



Wandle Learning Trust

45 Chestnut Grove, London SW12 8JZ

[wandlelearningtrust.org.uk](http://wandlelearningtrust.org.uk)

T: 020 8673 8737

E: [office@wandlelearningtrust.org.uk](mailto:office@wandlelearningtrust.org.uk)

